

LETTER • OPEN ACCESS

Impacts of wildfires on boreal forest ecosystem carbon dynamics from 1986 to 2020

To cite this article: Yiming Xu *et al* 2024 *Environ. Res. Lett.* **19** 064023

View the [article online](#) for updates and enhancements.

You may also like

- [Wildfire exacerbates high-latitude soil carbon losses from climate warming](#)
Zelalem A Mekonnen, William J Riley, James T Randerson et al.
- [Modeling the effects of fire severity and climate warming on active layer thickness and soil carbon storage of black spruce forests across the landscape in interior Alaska](#)
H Genet, A D McGuire, K Barrett et al.
- [Effects of contemporary land-use and land-cover change on the carbon balance of terrestrial ecosystems in the United States](#)
Benjamin M Sleeter, Jinxun Liu, Colin Daniel et al.

Breath Biopsy Conference

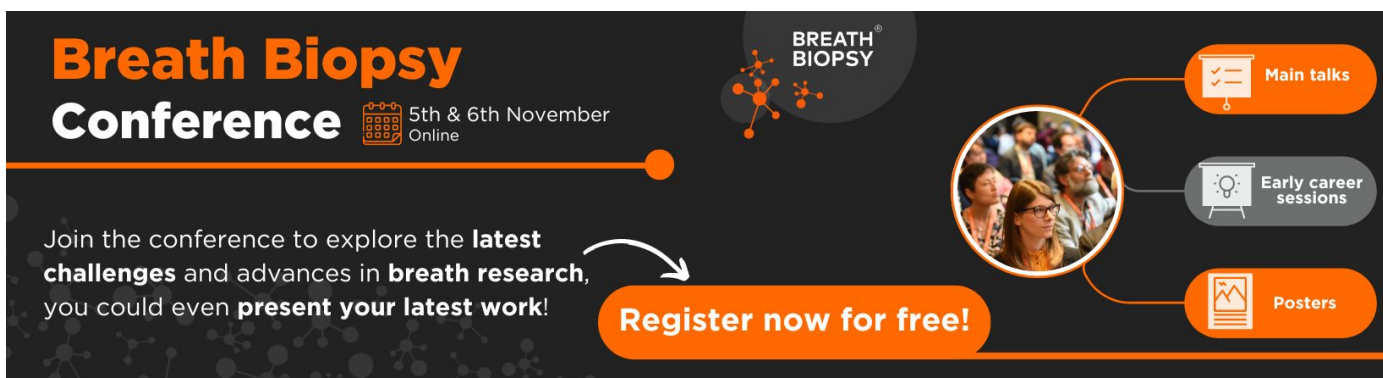
5th & 6th November Online

Join the conference to explore the **latest challenges** and advances in **breath research**, you could even **present your latest work!**

Register now for free!

BREATH BIOPSY

- Main talks
- Early career sessions
- Posters



ENVIRONMENTAL RESEARCH
LETTERS

LETTER

Impacts of wildfires on boreal forest ecosystem carbon dynamics from 1986 to 2020

OPEN ACCESS

RECEIVED
28 January 2024REVISED
14 April 2024ACCEPTED FOR PUBLICATION
8 May 2024PUBLISHED
20 May 2024Yiming Xu¹, Qianlai Zhuang^{1,*}, Bailu Zhao¹, Michael Billmire², Christopher Cook², Jeremy Graham², Nancy HF French²  and Ronald Prinn³¹ Department of Earth, Atmospheric and Planetary Sciences, Purdue University, West Lafayette, IN 47907, United States of America² Michigan Tech Research Institute, Michigan Technological University, Ann Arbor, MI 48105, United States of America³ Department of Earth, Atmospheric, and Planetary Sciences, MIT, Cambridge, MA, United States of America

* Author to whom any correspondence should be addressed.

E-mail: qzhuang@purdue.eduOriginal content from this work may be used under the terms of the [Creative Commons Attribution 4.0 licence](https://creativecommons.org/licenses/by/4.0/).

Any further distribution of this work must maintain attribution to the author(s) and the title of the work, journal citation and DOI.

**Keywords:** wildfire, ecosystem modeling, carbon dynamics, land-surface processSupplementary material for this article is available [online](#)**Abstract**

Wildfires significantly change boreal forest ecosystem carbon balance through both direct combustion and post-fire carbon dynamics. Affected vegetation influences soil thermal regime and carbon cycling by impacting the surface energy balance of boreal forests. This study uses a process-based biogeochemistry model to quantify carbon budget of North American boreal forests during 1986–2020 based on satellite-derived burn severity data. During the study period, burn severity generally increases. Fires remove ecosystem carbon of 2.4 Pg C and reduce net ecosystem production (NEP) from 32.6 to 0.8 Tg C yr⁻¹, making the forest ecosystems lose 3.5 Pg C, shifting a carbon sink to a source. The canopy's cooling effect leads to lower soil temperature and lower net primary production due to lower nitrogen mineralization and uptake. Post-fire NEP decreases from 1.6 to 0.8 Tg C yr⁻¹. This reduction accounts for 50% of the simulated NEP when the effects of fire-affected canopy are not considered. Our study highlights the importance of wildfires and their induced-canopy changes in soil thermal and ecosystem carbon dynamics of boreal forests.

1. Introduction

Boreal forests store more than one-third of global terrestrial carbon (Kasischke and Stocks 2000). This large carbon pool is vulnerable to fire disturbance (Helbig *et al* 2016) and will potentially release large amounts of carbon into the atmosphere through direct combustion emission and post-fire decreased ecosystem production (Kurz and Apps 1999, Amiro *et al* 2006, Yin *et al* 2020, Zhao *et al* 2021). The warming climate under anthropogenic forcings has increased burned area and burn severity in boreal forests (Gillett *et al* 2004, Iglesias *et al* 2022, Zheng *et al* 2023), suggesting there are positive feedbacks between fires and global climate (Moubarak *et al* 2023).

Wildfires influence carbon dynamics in boreal forests by removing vegetation carbon via crown fires and through consumption of surface organic matters, including soil organic carbon (Turquety *et al* 2007,

Turetsky *et al* 2011, De Groot *et al* 2013, Rogers *et al* 2015). With changing ecosystem structure, soil moisture, soil temperature, carbon dynamics can be significantly affected (Sullivan *et al* 2011, Li *et al* 2017). Soil organic matter (SOM) combustion can release a large quantity of carbon into the atmosphere, accounting for up to 90% of the total carbon emission for severe fires (Walker *et al* 2018). In addition to direct combustion emissions, post-fire soil respiration can also impact the carbon budget by changing soil temperature and moisture (Kulmala *et al* 2014). The post-fire net primary production (NPP) can also decrease significantly due to the loss of the canopy (Zhao *et al* 2021).

After fire, the loss of canopy and SOM influences soil temperature, in turn, affecting carbon dynamics (Drüke *et al* 2021, Martín Belda *et al* 2022, Oppen *et al* 2022, Xu and Zhuang 2023). Boreal forests underlain with permafrost are especially vulnerable to this effect since their physical properties and carbon storage

are sensitive to soil temperature changes (Hayes *et al* 2014, Johnston *et al* 2014). After fire, the loss of canopy can alter the albedo of land and impact the local radiative energy budget. This is because canopy can reflect solar radiation and reduce the short-wave radiation directly absorbed by the land (Gu *et al* 1999). Canopy also influences the near-surface viscosity and change the sensible heat flux between land and the atmosphere (Gu *et al* 1999). Observations indicate that sub-canopy temperature is 2.1 °C lower than free atmosphere in summer across Europe (Zellweger *et al* 2020, Haesen *et al* 2021). Canopy presence induces soil temperature changes and therefore the regional carbon budget, especially for post-fire areas where the canopy changes during the recovery process. For example, heterotrophic respiration (R_H) and nitrogen mineralization are directly influenced by soil temperature, impacting the soil carbon pool sizes. In addition, SOM loss depends on burn severity and carbon storage. Fires influence soil thermal dynamics during the forest recovery (Sullivan *et al* 2011, Zhao *et al* 2021). Taken together, fires will directly affect carbon release, canopy structure, altering surface energy balance and soil thermal regime, indirectly impacting carbon balance.

Previous studies have modeled fire or canopy's influences on carbon dynamics with limitations. Many of them mainly focus on direct combustion emission (Conard and Ivanova 1997, Amiro *et al* 2001, French *et al* 2002), and have not considered the impacts of burn severity because it is unavailable or difficult to obtain (Kasischke *et al* 2005, Balshi *et al* 2007). Some studies have tried to overcome these limitations by using process-based models (Zhao *et al* 2021) but did not consider the impacts of fire-induced canopy changes on soil thermal regime and carbon budget. For studies that have included canopy's influence, many of them have not used explicit burn severity information (Martín Belda *et al* 2022, Xu and Zhuang 2023). In all, carbon modeling studies can be improved by using the data of satellite data of burn severity and fire-induced canopy changes.

This study revises a sophisticated process-based model, the terrestrial ecosystem model (TEM) (Zhuang *et al* 2002) to quantify the influence of fire and canopy change on regional carbon dynamics in North American boreal forests. The interactions between canopy, fire and soil thermal dynamics are modeled. We incorporate a soil surface energy balance model (Xu and Zhuang 2023) to a previous TEM model (Zhao *et al* 2021). The revised-TEM is then used to evaluate the spatial and temporal carbon dynamics based on satellite burn severity data during 1986–2020. The revised-TEM is expected to better estimate the soil temperature under the influence of fire-induced canopy changes, the carbon storage changes, combustion emissions, and net ecosystem carbon exchanges.

2. Data and methods

2.1. Burn severity data development

Historical fire burn areas were retrieved from 1986 to 2020 for 45 degrees latitudes northward in North America, based on the data from the Bureau of Land Management & Alaska Fire Service Alaska Interagency Coordination Center, the Canadian National Fire Database, and the United States geological survey combined wildfire dataset (Welly and Jeffries 2020). The Alaska, Canada, and contiguous U.S. perimeters were created by their respective agencies through a combination of methods over the period of interest, with older fires (pre-Landsat) typically requiring field data and aerial imagery, and more recent fires being satellite-derived. All NA fire perimeters were standardized through a series of sequential dissolves to fix issues regarding fire ID unicity using GIS-based tools available in QGIS or ArcGIS Pro. Fire perimeters were then simplified to a 60-meter resolution to improve run time of subsequent processing steps.

A google earth engine (GEE) script was developed to calculate a pre- and post-normalized burn ratio (NBR) value (Miller and Thode 2007) from within each perimeter, as well as from within a 300 m buffer ring offset 1.5 km from the perimeter. Because Landsat Collection 2 was not yet available on GEE at time of analysis, data were sourced from Landsat Collection 1. Use of Landsat Collection 2 GEE product in a future data product release would provide image calibration and other improvements relative to Collection 1 (Crawford *et al* 2023). Landsat sensors 4–8 were used after applying a cloud, cloud shadow, snow, and water mask. NBR for each fire was calculated as the ratio between the near infrared (NIR) and short-wave infrared bands for the available Landsat mission:

$$\text{NBR} = \frac{\text{NIR} - \text{SWIR}}{\text{NIR} + \text{SWIR}} \quad (1)$$

Pre-fire data use the median pixel values of the image collection, with images filtered to the approximate snow-free fire season of 15 June to 15 September, from the two years before the fire. Post-fire data use the median pixel values from the image collection 15 June to 15 September the year following the fire. The median pixel values from within the perimeter and buffer ring averaged to create a pre-fire NBR and post-fire NBR for each perimeter and buffer ring. These NBR values were written out of GEE along with each unique fire ID. Methods in the GEE code for masking and pooling the Landsat 4–8 data were sourced from Holsinger *et al* (2021).

The values in the buffer ring are used to correct for differences between the imagery not related to the fire (e.g. phenology, plant health), as this land area is assumed to have not burned. One caveat is that in some areas that had nearby fires within the same

year, there may be some overlap between the buffer ring and another fire perimeter, however these cases are uncommon. The difference between the pre-fire NBR and the postfire NBR is known as the delta NBR (dNBR) and can be used to represent burn severity for a fire:

$$\text{dNBR} = \text{NBR}_{\text{prefire}} - \text{NBR}_{\text{postfire}}. \quad (2)$$

In addition to calculating dNBR for each individual fire over 1986–2020, data were aggregated at a $0.5^\circ \times 0.5^\circ$ grid cell for each year in order to incorporate these data into TEM simulations.

2.2. Model description

TEM is a process-based biogeochemical model (Zhuang *et al* 2002) that quantifies carbon and nitrogen dynamics in terrestrial ecosystems. TEM has been used to simulate fire disturbance impacts on carbon dynamics in North America (Zhuang *et al* 2002, Zhao *et al* 2021). In addition to the direct combustion emission, TEM can also estimate carbon dynamics during post-fire recovery (Zhao *et al* 2021). The foliage recovery is assumed linear for the first 5 years and sigmoid for the following years. In TEM, the soil thermal module uses surface air temperature as upper boundary condition to simulate soil thermal dynamics, which might cause large uncertainties (Haesen *et al* 2021), especially in summer when solar radiation is very strong (Xu and Zhuang 2023). In this study, we incorporate a surface energy balance scheme into TEM by considering the influences of plant canopy on soil surface temperature. The model is then used to evaluate the impacts of fire disturbance on regional carbon dynamics. More details of this scheme can be found in the supporting information (figure S1).

The calculated dNBR, representing burn severity for fires, is used to estimate the proportion of vegetation and soil carbon consumption in TEM. In the model, fires remove vegetation and soil carbon based on the burn severity (Zhuang *et al* 2002, Zhao *et al* 2021). Fires with greater burn severity remove more carbon and nitrogen from the ecosystem. Following fire, soil organic carbon composition can vary more drastically than vegetation carbon due to reduction in litterfall while the vegetation recovers. This reduced vegetation carbon and soil nitrogen storage results in lower ecosystem production during the recovery phase. In addition, fires impact soil thermal dynamics (i.e. soil temperature), together with the canopy's influence on soils, further changing carbon and nitrogen dynamics, such as R_H and vegetation nitrogen uptake.

2.3. Model validation

The revised-TEM is calibrated using observation data from black spruce ecosystems in Alaska (Zhuang *et al* 2002, Zhao *et al* 2021). The canopy energy balance scheme is calibrated using publicly available soil temperature observation data, collected and published

by AmeriFlux (Xu and Zhuang 2023). This scheme better estimates the soil thermal regime. The parameters used in this study are from previous studies (Zhao *et al* 2021, Xu and Zhuang 2023). Canopy reflects short-wave radiation and has a cooling effect on the soil surface, especially in summer when the shortwave radiation is the strongest in a year. This influence is close to zero when it is winter (Xu and Zhuang 2023). Here, we compare simulated summer soil surface temperature with observation data from AmeriFlux (Black 2016a, 2016b, 2023, Ueyama *et al* 2023). Simulated soil surface temperature in July is generally higher than observations when canopy's effect is not considered (figure 1). When canopy's effect is considered, the simulated soil surface temperature is much closer to the observations.

We compare the simulated carbon dynamics with field measurements in July 2015 from Köster *et al* (2017) at two sites burned in 1990 and 2012, respectively (table 1). The model can well estimate the vegetation carbon, soil carbon, soil organic nitrogen, and surface soil temperature.

2.4. Regional input data and simulation protocols

Data required to drive TEM includes monthly mean surface air temperature, cloudiness, precipitation, vapor pressure, and surface wind speed, which are from ERA5 from 1986 to 2020 (Hersbach *et al* 2020). Spatially-explicit soil texture (percentage of silt, clay and sand), elevation, plant function types and annual CO_2 concentrations of the atmosphere are also used (Melillo *et al* 1993, Zhuang *et al* 2002). The model is spun-up for 120 years before 1986 with cyclic climate data from 1986 to 2000 to achieve an equilibrium state. Then transient simulations from 1986 to 2020 are conducted for each grid cell at a spatial resolution of $0.5^\circ \times 0.5^\circ$ for the North American boreal forests.

Two regional simulations are conducted, with and without fire disturbance considered, respectively. Fire polygons are dissected into each unit with unique fire history and then intersected with each grid cell when considering fire impacts. The output values for each grid cell are area-weighted mean of each fire polygon and no-burn area within the cell (Zhao *et al* 2021). An extra simulation with fire considered but without a canopy energy balance scheme is also conducted for quantifying the impact of the canopy.

3. Results

3.1. Regional burn area and severity

Most grid cells ($0.5^\circ \times 0.5^\circ$) are burned for less than 15% while the maximum burn proportion in a grid cell can exceed 80%, which mainly occurred in Alaska, Central Canada and Quebec (figure 2). The average dNBR value is 200–400 for the most burned area (figure S2(a)), which agrees with previous studies (Key and Benson 2006, Allen and Sorbel

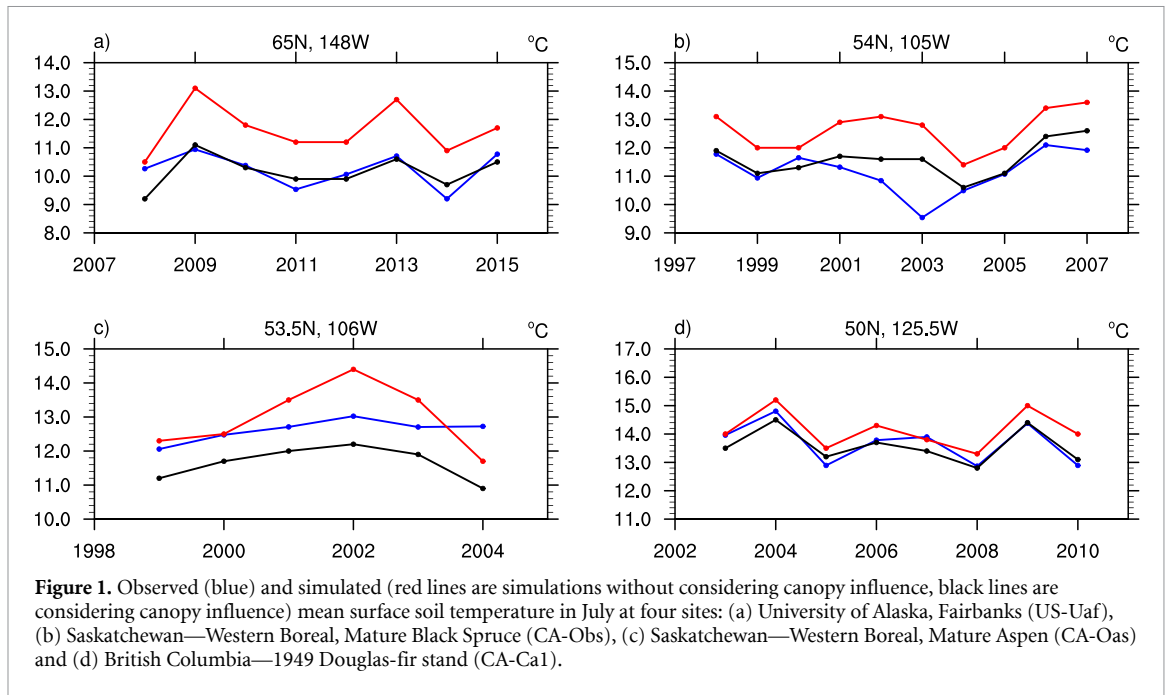


Figure 1. Observed (blue) and simulated (red lines are simulations without considering canopy influence, black lines are considering canopy influence) mean surface soil temperature in July at four sites: (a) University of Alaska, Fairbanks (US-Uaf), (b) Saskatchewan—Western Boreal, Mature Black Spruce (CA-Obs), (c) Saskatchewan—Western Boreal, Mature Aspen (CA-Oas) and (d) British Columbia—1949 Douglas-fir stand (CA-Ca1).

Table 1. Comparison between observed and modeled variables.

Burn year	Vegetation C (g m^{-2})		Soil organic C (g m^{-2})		Soil organic N (g m^{-2})		Soil temperature 5 cm ($^{\circ}\text{C}$)	
	Obs	Model	Obs	Model	Obs	Model	Obs	Model
1990	698.9 ± 178.2	701.2	7460.9 ± 8298.7	5043.7	264.5 ± 294.2	211.0	9.8 ± 0.5	9.8
2012	220.4 ± 88.4	287.6	2612.3 ± 1422.2	3441.0	108.1 ± 58.8	124.6	9.6 ± 2.8	8.6

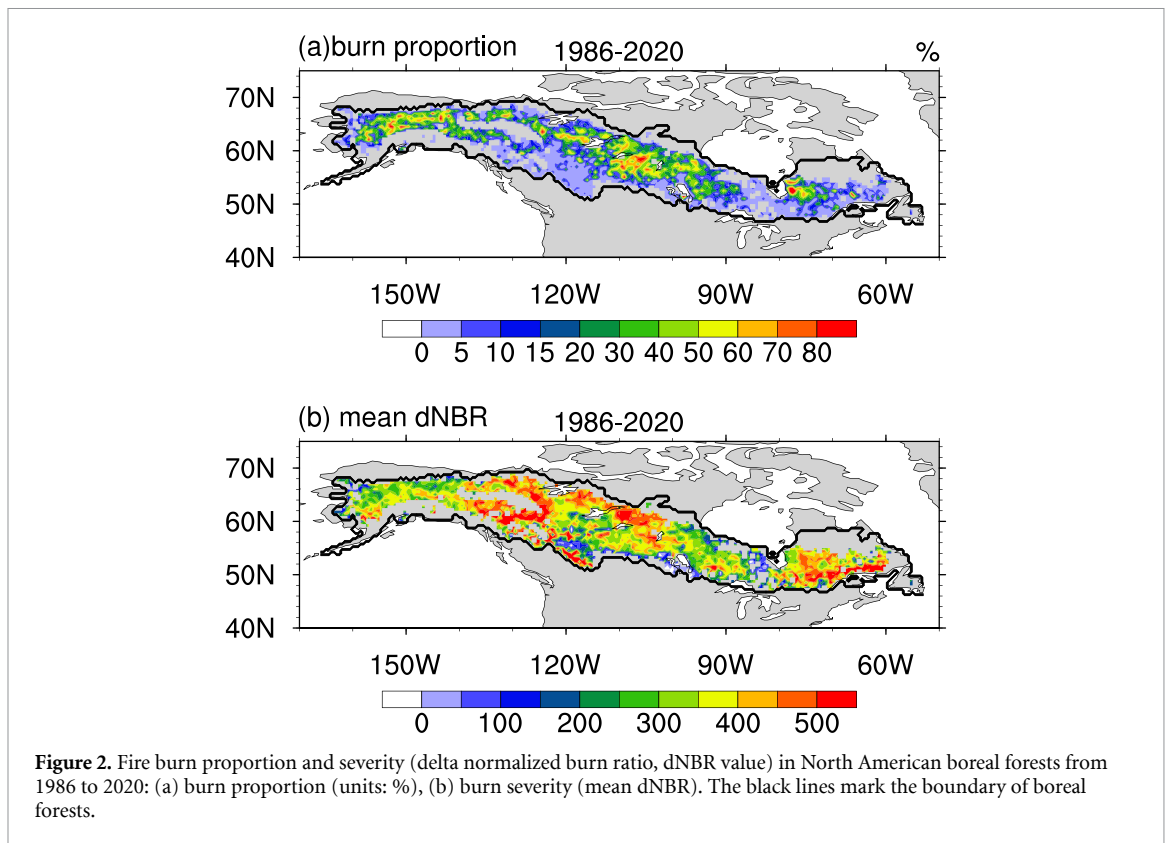
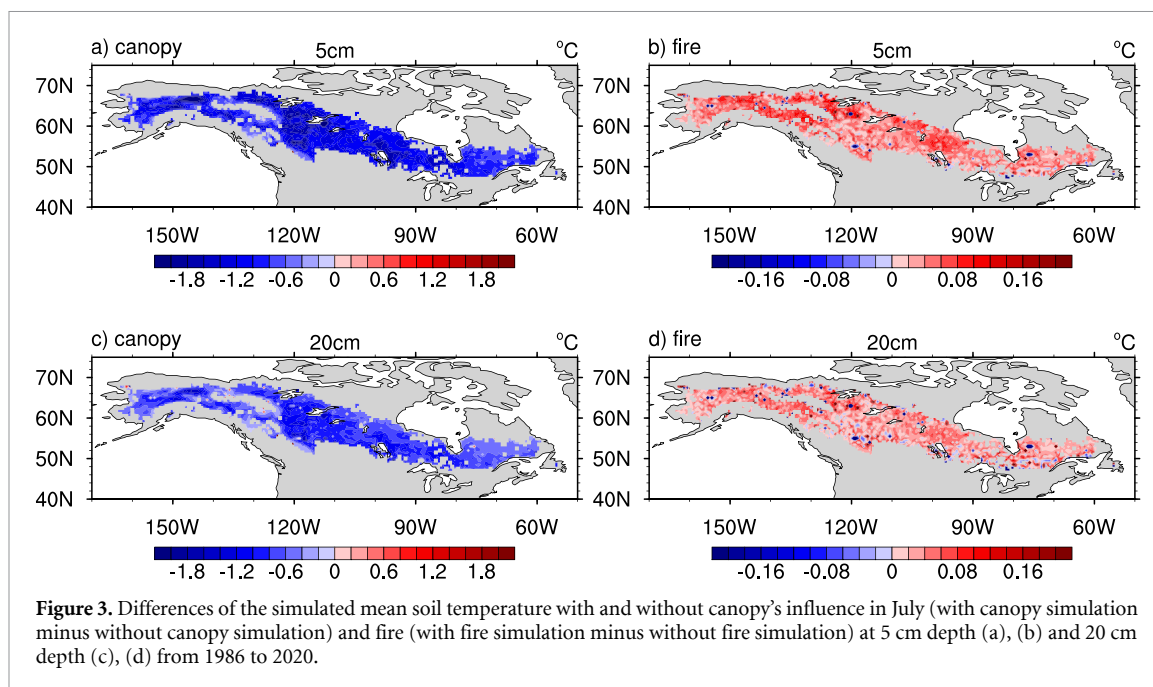


Figure 2. Fire burn proportion and severity (delta normalized burn ratio, dNBR value) in North American boreal forests from 1986 to 2020: (a) burn proportion (units: %), (b) burn severity (mean dNBR). The black lines mark the boundary of boreal forests.

2008). The overall area-weighted value is 368.0, which is slightly higher than the estimates in Zhao *et al* (2021). There is a slightly increasing trend for the

annual area-weighted dNBR value (figure S2(b)), indicating the burn severity is increasing in this region.



3.2. Fire impacts on soil thermal regime

Compared with the no-fire simulation, simulated mean soil temperature increases (figure 3(b)) (Zhao *et al* 2021) since burning heats the soil surface and removes the ground moss layer which serves as a heat insulator. Deep soil temperature change follows the spatial pattern of surface soil temperature but with a smaller magnitude (figure 3(d)). Overall fires increase mean soil surface temperature about 0.1 °C for burn areas in 2020 (figure S3(b)).

3.3. Fire impacts on carbon dynamics

When there is no fire, the whole ecosystem acts as a net carbon sink in this region with highest net ecosystem production (NEP) in east Canada and Alaska (figure 4(b)). The regional 35 year mean NEP is 32.6 Tg C yr⁻¹ (table 2). When there is fire, the NEP significantly decreases with many regions changing from a carbon sink to a source (figure 4(a)). This is consistent with other estimates, showing fires greatly reduce the productivity of boreal forests (Amiro *et al* 2006, Zhao *et al* 2021). The regional 35 year mean NEP is 0.8 Tg C yr⁻¹ (table 2). The NEP affected by fire (figure 4(c)) shows a similar spatial pattern of fire areas (figure 2(a)). A similar spatial pattern is also found for ecosystem carbon storage (figures 4(d)–(f)), where areas with large fires lose more ecosystem carbon (vegetation carbon plus soil carbon storage).

When fire is not considered, the estimated ecosystem carbon gradually increases from 1986 to 2020 (figure S4(d)), acting as a net carbon sink. With the fire disturbance, there is an opposite trend, resulting in a net carbon source. With and without fire, NPP, R_H and NEP are synchronous with each other (figure S4). Fires reduce NPP by 154.8 g C m⁻² yr⁻¹ on average, which agrees with previous studies (Hicke *et al*

2003, Sparks *et al* 2018). Fires increase soil temperature (figure 3), enhancing R_H . On the other hand, fires also significantly remove soil carbon (figure S4(d)), decreasing R_H . Overall, fires reduce R_H by 31.5 g C m⁻² yr⁻¹ on average.

When canopy's influence is not considered, TEM estimates the regional mean NEP is 1.6 Tg C yr⁻¹ (table 2). It is slightly lower than the estimate by Zhao *et al* (2021), which might be due to the relatively higher burn severity in our data. When canopy's influence is considered, the mean NEP under fire in this region is 0.8 Tg C yr⁻¹ (table 2) while the combustion emissions are 67.7 Tg C yr⁻¹ (table 2). That means although the boreal forests show a carbon sink during the post-fire recovery, the whole region still acts as a carbon source and will release 2340.5 Tg C into the atmosphere during the study period (66.9 Tg C yr⁻¹). Compared with the no-fire simulation, the whole ecosystem carbon storage is reduced by 3481.5 Tg C or 99.5 Tg C yr⁻¹ (figure S4).

3.4. Impacts of fire-induced canopy changes on soil thermal regime and carbon dynamics

The fire-induced changes in canopy can significantly influence ecosystem carbon dynamics (Martín Belda *et al* 2022, Oppen *et al* 2022, Xu and Zhuang 2023). Here we compare the simulations between with and without the canopy energy balance scheme in the model in addition to considering fire impacts.

Spatial differences of the simulated monthly mean soil temperature in July (when solar radiation is the strongest) for the period of 1986–2020 due to the influences of the canopy are significant (figure 2). Soil surface temperature at 5 cm soil depth (figure 3(a)) is consistently lower with a magnitude of about 1 °C for most grid cells (Zellweger *et al* 2020, Haesen *et al*

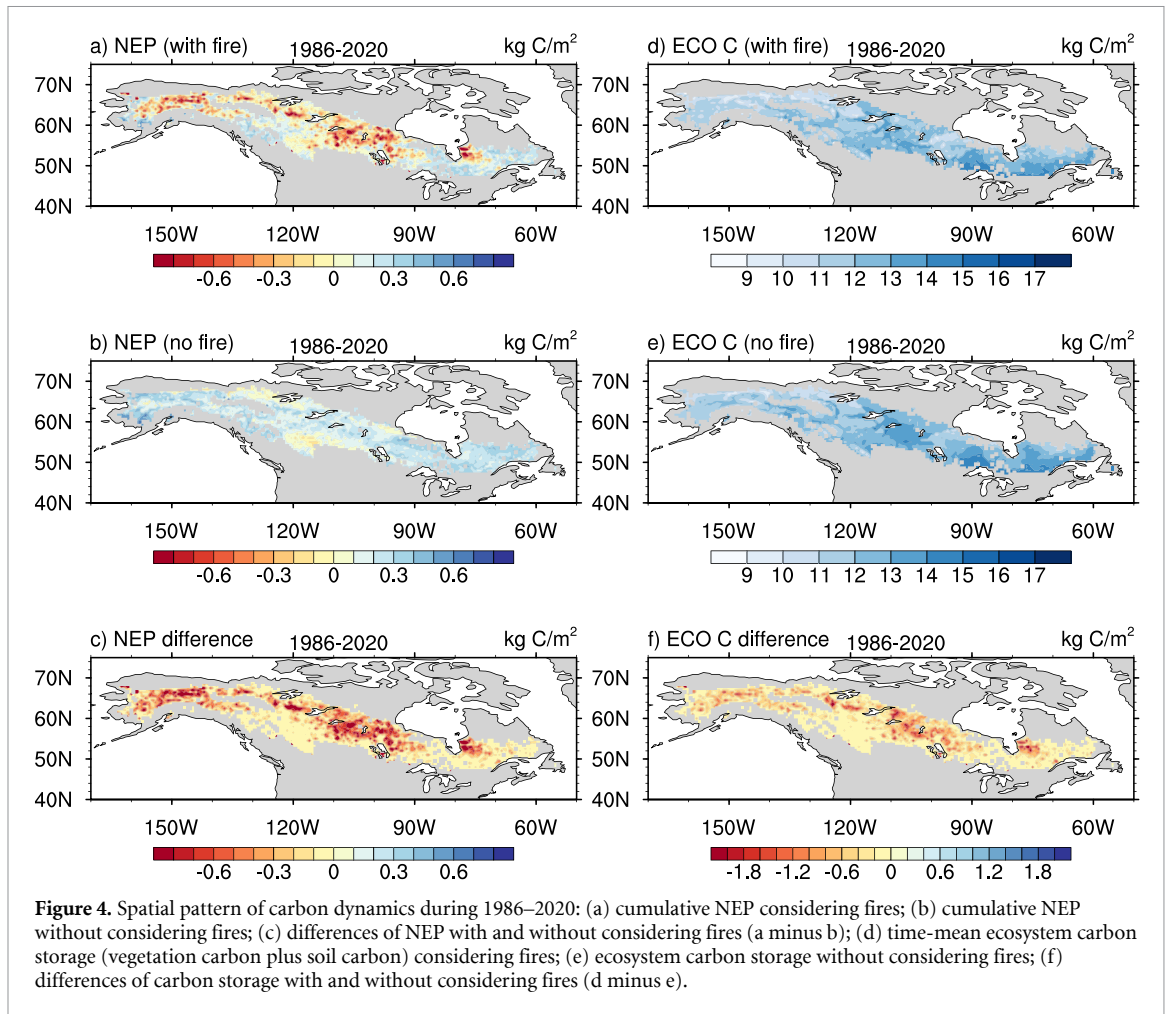


Figure 4. Spatial pattern of carbon dynamics during 1986–2020: (a) cumulative NEP considering fires; (b) cumulative NEP without considering fires; (c) differences of NEP with and without considering fires (a minus b); (d) time-mean ecosystem carbon storage (vegetation carbon plus soil carbon) considering fires; (e) ecosystem carbon storage without considering fires; (f) differences of carbon storage with and without considering fires (d minus e).

Table 2. Regional mean NPP, R_H , NEP and combustion emissions from three simulations.

Units: Tg C yr ⁻¹	With fire		Without fire
	With canopy	Without canopy	With canopy
NPP	729.4	755.3	773.5
R_H	728.6	753.7	740.9
NEP	0.8	1.6	32.6
Combustion	67.7	69.2	/

2021). Deep soil temperature (20 cm, figure 3(b)) exhibits a similar pattern to the soil surface with smaller magnitude of changes since the deep soil is less impacted by the air and land surface processes. The regional mean difference is about 0.9 °C for soil surface temperature (figure S3(a)) and 0.6 °C for deep soil temperature, indicating a persistent cooling effect from 1986 to 2020.

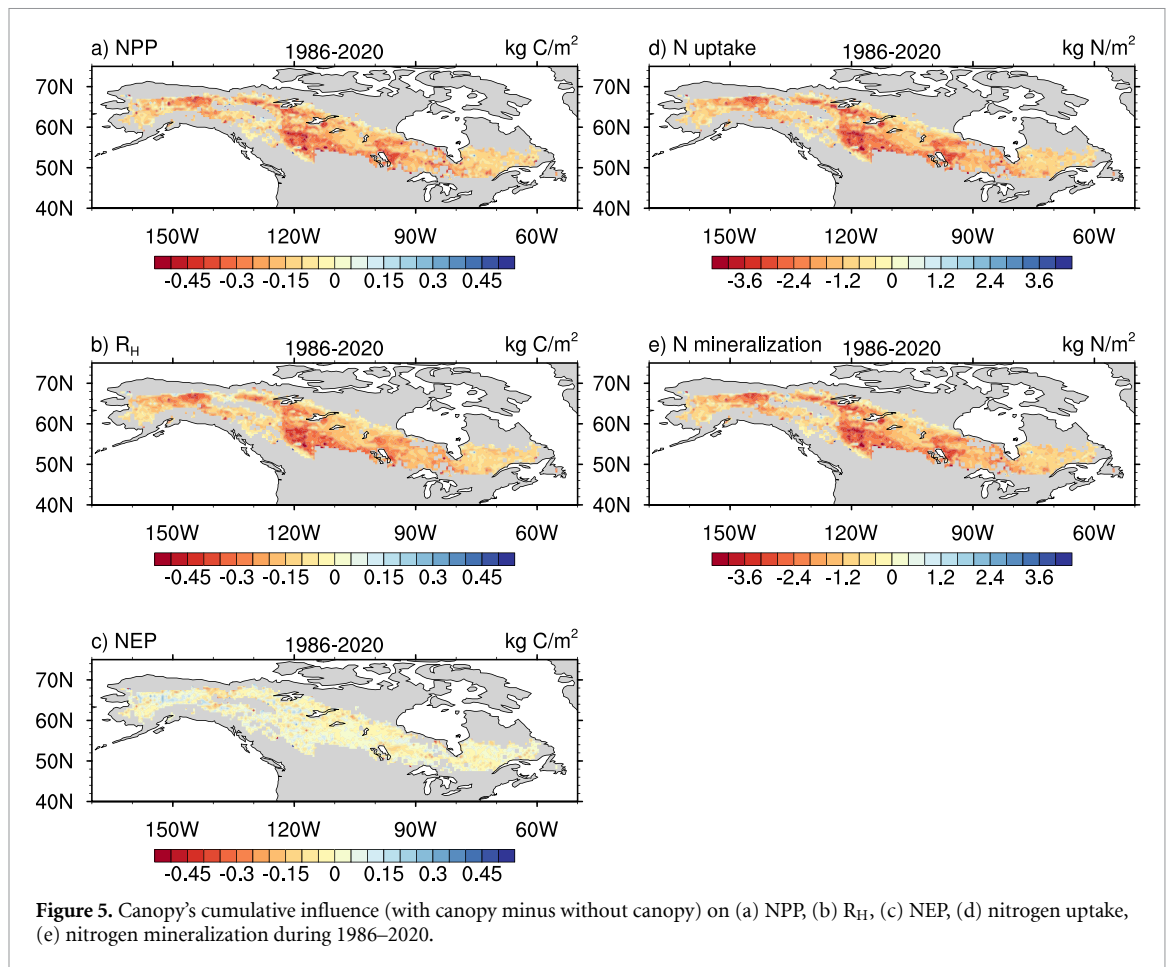
Both NPP and R_H decreased due to the canopy's cooling effect (figure 5). The magnitude of the changes shows a similar pattern to the soil temperature changes (figure 3), which means stronger cooling led to higher carbon changes. The regional differences of NPP and R_H (figure S5) remain negative for each year during 1986–2020. In all, the whole ecosystem has a decreased NEP of 0.8 Tg C yr⁻¹ (table 2) since the decreased regional mean NPP

is higher than R_H , resulting in more carbon being released to the atmosphere due to the canopy's influence. The estimated vegetation carbon and soil carbon are lower (figure S6), making the whole ecosystem lose 670.3 Tg C/year with 370.8 Tg C yr⁻¹ from vegetation and 299.5 Tg C yr⁻¹ from soils during 1986–2020.

4. Discussion

4.1. Canopy's influence on carbon dynamics

Fire-induced canopy changes significantly affect carbon dynamics both directly and indirectly. First, the fire-induced canopy changes directly affect GPP, thus NPP. Second, the canopy changes affect soil surface energy balance and soil temperatures, influencing soil respiration (R_H) and nitrogen mineralization and



plant nitrogen uptake, thus NPP. While our previous analysis indicated that R_H decreases due to canopy's cooling effect on soil temperatures (Jiang *et al* 2016), the effects of fire-induced canopy changes have not been analyzed. Here we show that nitrogen mineralization and uptake decreased due to the canopy's cooling effect. The reduced nitrogen uptake inhibits GPP and NPP (figure 5(a)), resulting in a net carbon source. In addition, the spatial patterns of NEP are consistent with soil temperature changes (figure 3).

Our simulated NPP and R_H are both lower considering fire-induced canopy changes comparing with the simulations without considering canopy changes (table 2). The estimated decrease of NEP with 0.8 Tg C yr^{-1} accounts for about 50% of the originally simulated NEP without considering fire-induced canopy effects (table 2). The lower ecosystem carbon storage due to canopy's influence (figure S6) causes a lower combustion emissions (table 2). Overall, canopy's cooling effects significantly affect GPP and NPP and regional carbon dynamics (Martín Belda *et al* 2022, Oppen *et al* 2022, Xu and Zhuang 2023), especially when fire disturbance exists.

4.2. Comparison with previous estimates

In comparison with previous studies (table S1), our estimated combustion emissions in Alaska agree well with Wiedinmyer and Neff (2007), but higher than

Zhao *et al* (2021) and Kasischke and Hoy (2012), lower than Chen *et al* (2017), Goetz *et al* (2012). These differences are potentially due to most of these studies focusing on Alaska while our study covers the boreal forests in whole northern North America. For the Canadian region, our estimates are generally higher (Goetz *et al* 2012, Zhao *et al* 2021) but agree with Chen *et al* (2017). For the whole North America, our estimates of combustion emissions generally agree with some newly-published studies (Phillips *et al* 2022, Potter *et al* 2023) but is a little higher than some previous studies (van der Werf *et al* 2010, Zhao *et al* 2021). This might be explained by relatively higher burn severity in our data compared with Zhao *et al* (2021).

4.3. Uncertainties and limitations

Using dNBR to represent burn severity to estimate fire impacts on carbon might have resulted in uncertainties of carbon dynamics since other factors such as moisture, elevation and time of burn are not considered in this study (Tan *et al* 2007, Kasischke and Hoy 2012, Zhao *et al* 2021). For example, it tends to be wetter and more difficult to burn in lower elevation forests. Additionally, the relationship between dNBR and combustion proportion is established based on black spruce dominated forests while North American boreal forests also include white

spruce or pines and other forest types. This might bias burn severity estimations since black spruce tends to show higher dNBR than white spruce with the same burn severity (Rogers *et al* 2015). For simplicity, this study did not distinguish between these two types but more detailed vegetation types of specific burn severity is needed to better simulate the regional forests response to fire (Amiro *et al* 2001, Stinson *et al* 2011). Our model was originally calibrated with field data from forests in Alaska. It might also induce uncertainties when the parameters are applied for whole boreal forests in North America (Zhao *et al* 2021).

In developing our burn severity data, we used a burn severity product as a (Loboda *et al* 2018). This dataset does not cover all of North America boreal forests, just the western half of the region and its temporal coverage ends in 2015. Thus, our carbon analysis is based on more spatially and temporally complete burn severity data that are expanded from Loboda *et al* (2018).

While we have considered vegetation and moss regrowth and soil carbon recovery and their impacts on soil thermal and carbon dynamics (Zhuang *et al* 2002), we have not explicitly modeled the shift of vegetation type after fire (Gewehr *et al* 2014, Stuenzi *et al* 2022). Severe fires might shift dominant vegetation type from slow-growing black spruce to fast growing deciduous trees, resulting in a difference of carbon storage (Mack *et al* 2021). In addition, the post-fire recovering process of moss (Zhuang *et al* 2002) and soil surface organic matter recovering and their impacts on soil thermal regime were modeled with a generic formulation of the recoveries. However, due to lacking information on regional moss dynamics, such as moss thickness, the regional simulations have not considered these effects in a spatially explicit manner. Finally, the burn severity might influence the presence of permafrost (Lucash *et al* 2023), which has not been evaluated in this study while our focus is on examining how fires-induced canopy changes affect soil temperature changes in upper soil layers, in turn, influencing carbon dynamics. These complex vegetation and soil dynamics and their interactions after fire shall be incorporated into future ecosystem carbon modeling for this region.

5. Conclusions

Using satellite-derived burn severity data, our quantification shows that boreal forest wildfires significantly reduce ecosystem carbon storage through combustion emissions at $67.7 \text{ Tg C yr}^{-1}$ with total 2.4 Pg C during 1986–2020 and reduce post-fire ecosystem production from $32.6 \text{ Tg C yr}^{-1}$ to 0.8 Tg C yr^{-1} . As a result, wildfires cause the North American boreal forests to lose 3.5 Pg C during the study period and change the boreal forests from a carbon sink to a source. With lower soil temperature simulated by considering the canopy influence on soil thermal

dynamics, the revised model estimates a lower NPP due to inhibited nitrogen uptake and mineralization and lower heterotrophic respiration due to lower soil temperature. Despite their counteractive effects, fire-induced canopy changes lead to a reduced post-fire NEP from 1.6 Tg C yr^{-1} without considering canopy's influence to 0.8 Tg C yr^{-1} with considering canopy's influence during 1986–2020. This reduction accounts for 50% of the originally simulated post-fire NEP that does not consider canopy influences. This study highlights the importance of considering forest burn severity and fire-induced canopy changes in regional carbon dynamics in boreal forests of North America.

Data availability statement

The data that support the findings of this study are openly available at the following URL/DOI: <https://doi.org/10.4231/4Q4V-MB96>.

Acknowledgments

This study was supported by a NASA Grant #80NSSC21K1710.

ORCID iD

Nancy HF French  <https://orcid.org/0000-0002-2389-3003>

References

- Allen J L and Sorbel B 2008 Assessing the differenced normalized burn ratio's ability to map burn severity in the boreal forest and tundra ecosystems of Alaska's national parks *Int. J. Wildland Fire* **17** 463–75
- Amiro B D, Barr A G, Black T A, Iwashita H, Kljun N, McCaughey J H, Morgenstern K, Murayama S, Nesic Z and Orchansky A 2006 Carbon, energy and water fluxes at mature and disturbed forest sites, saskatchewan, canada *Agric. For. Meteorol.* **136** 237–51
- Amiro B D, Todd J B, Wotton B, M, Logan K A, Flannigan M D, Stocks B J, Mason J A, Martell D L and Hirsch K G 2001 Direct carbon emissions from canadian forest fires, 1959–1999 *Can. J. For. Res.* **31** 512–25
- Balshi M S *et al* 2007 The role of historical fire disturbance in the carbon dynamics of the pan-boreal region: a process-based analysis *J. Geophys. Res.* **112** G02029
- Black T A 2016a *AmeriFlux BASE CA-Oas Saskatchewan—Western Boreal, Mature Aspen, Ver. 1–1* (AmeriFlux AMP) (<https://doi.org/10.17190/AMF/1375197>)
- Black T A 2016b *AmeriFlux BASE CA-Obs Saskatchewan—Western Boreal, Mature Black Spruce, Ver. 1–1* (AmeriFlux AMP) (<https://doi.org/10.17190/AMF/1375198>)
- Black T A 2023 *AmeriFlux FLUXNET-1F CA-Ca1 British Columbia—1949 Douglas-fir stand, Ver. 3–5* (AmeriFlux AMP) (<https://doi.org/10.17190/AMF/2007163>)
- Chen G, Hayes D J and David McGuire A 2017 Contributions of wildland fire to terrestrial ecosystem carbon dynamics in North America from 1990 to 2012 *Glob. Biogeochem. Cycles* **31** 878–900
- Conard S G and Ivanova G A 1997 Wildfire in russian boreal forests—potential impacts of fire regime characteristics on emissions and global carbon balance estimates *Environ. Pollut.* **98** 305–13

- Crawford C J *et al* 2023 The 50 year landsat collection 2 archive *Sci. Remote Sens.* **8** 100103
- De Groot W J, Flannigan M D and Cantin A S 2013 Climate change impacts on future boreal fire regimes *For. Ecol. Manage.* **294** 35–44
- Drüke M, von Bloh W, Petri S, Sakschewski B, Schaphoff S, Forkel M and Thonicke K 2021 CM2Mc-LPJmL v1. 0: biophysical coupling of a process-based dynamic vegetation model with managed land to a general circulation model *Geosci. Model Dev.* **14** 4117–41
- French N H F, Kasischke E S and Williams D G 2002 Variability in the emission of carbon-based trace gases from wildfire in the alaskan boreal forest *J. Geophys. Res. Atmos.* **107** FFR-1-FFR 7–11
- Gewehr S, Drobyshev I, Berninger F and Bergeron Y 2014 Soil characteristics mediate the distribution and response of boreal trees to climatic variability *Can. J. For. Res.* **44** 487–98
- Gillett N P, Weaver A J, Zwiers F W and Flannigan M D 2004 Detecting the effect of climate change on canadian forest fires *Geophys. Res. Lett.* **31** 355–66
- Goetz S J *et al* 2012 Observations and assessment of forest carbon dynamics following disturbance in North America *J. Geophys. Res.* **117** G02022
- Gu L 1998 *Modeling Biophysical Exchanges and Micro-meteorology in Soil-vegetation-atmosphere Continuums: Results from a Two-story Boreal Aspen Forest* (University of Virginia)
- Gu L, Shugart H H, Fuentes J D, Black T A and Shewchuk S R 1999 Micrometeorology, biophysical exchanges and NEE decomposition in a two-story boreal forest—Development and test of an integrated model *Agric. For. Meteorol.* **94** 123–48
- Haesen S, Lembrechts J J, De Frenne P, Lenoir J, Aalto J, Ashcroft M B and Van Meerbeek K 2021 ForestTemp—Sub-canopy microclimate temperatures of European forests *Glob. Change Biol.* **27** 6307–19
- Hayes D J, Kicklighter D W, Mcguire A D, Chen M, Zhuang Q, Yuan F, Melillo J M and Wullschlegel S D 2014 The impacts of recent permafrost thaw on land–atmosphere greenhouse gas exchange *Environ. Res. Lett.* **9** 045005
- Helbig M, Pappas C and Sonntag O 2016 Permafrost thaw and wildfire: equally important drivers of boreal tree cover changes in the Taiga Plains, Canada *Geophys. Res. Lett.* **43** 1598–606
- Hersbach H, Bell B, Berrisford P, Hirahara S, Horányi A, Muñoz-Sabater J and Thépaut J N 2020 The ERA5 global reanalysis *Q. J. R. Meteorol. Soc.* **146** 1999–2049
- Hicke J A, Asner G P, Kasischke E S, French N H, Randerson J T, James Collatz G and Field C B 2003 Postfire response of North American boreal forest net primary productivity analyzed with satellite observations *Glob. Change Biol.* **9** 1145–57
- Holsinger L M, Parks S A, Saperstein L B, Loehman R A, Whitman E, Barnes J and Parisien M 2021 Improved fire severity mapping in the north american boreal forest using a hybrid composite method *Remote Sens. Ecol. Conserv.* **8** 222–35
- Iglesias V, Balch J K and Travis W R 2022 US fires became larger, more frequent, and more widespread in the 2000s *Sci. Adv.* **8** eabc0020
- Jiang Y, Zhuang Q, Sitch S, O'Donnell J A, Kicklighter D and Sokolov A 2016 Importance of soil thermal regime in terrestrial ecosystem carbon dynamics in the circumpolar north *Glob. Planet. Change* **142** 28–40
- Johnston C E, Ewing S A, Harden J W, Varner R K and Jorgenson M T 2014 Effect of permafrost thaw on CO₂ and CH₄ exchange in a western alaska peatland chronosequence *Environ. Res. Lett.* **9** 085004
- Kasischke E S and Hoy E E 2012 Controls on carbon consumption during Alaskan wildland fires *Glob. Change Biol.* **18** 685–99
- Kasischke E S, Hyer E J, Novelli P C, Bruhwiler L P, Nhf F and Sukhinin A I 2005 Influences of boreal fire emissions on northern hemisphere atmospheric carbon and carbon monoxide *Glob. Biogeochem. Cycles* **1** 19
- Kasischke E S and Stocks B J 2000 *Fire, Climate Change, and Carbon Cycling in the Boreal Forest* (Springer)
- Key C H and Benson N C 2006 Landscape assessment (LA) FIREMON: Fire Effects Monitoring and Inventory System vol 164 (US Department of Agriculture, Forest Service, Rocky Mountain Research) pp LA–1
- Köster E, Köster K, Berninger F, Aaltonen H, Zhou X and Pumpanen J 2017 Carbon dioxide, methane and nitrous oxide fluxes from a fire chronosequence in subarctic boreal forests of Canada *Sci. Total Environ.* **601** 895–905
- Kulmala L *et al* 2014 Changes in biogeochemistry and carbon fluxes in a boreal forest after the clear-cutting and partial burning of slash *Agric. For. Meteorol.* **188** 33–44
- Kurz W A and Apps M J 1999 A 70 year retrospective analysis of carbon fluxes in the canadian forest sector *Ecol. Appl.* **9** 526–47
- Li F, Lawrence D M and Bond-Lamberty B 2017 Impact of fire on global land surface air temperature and energy budget for the 20th century due to changes within ecosystems *Environ. Res. Lett.* **12** 044014
- Loboda T V, Chen D, Hall J V and He J 2018 ABoVE: Landsat-derived Burn Scar dNBR across Alaska and Canada, 1985–2015 (ORNL DAAC) (<https://doi.org/10.3334/ORNLDAAC/1564>)
- Lucash M S *et al* 2023 Burning trees in frozen soil: simulating fire, vegetation, soil, and hydrology in the boreal forests of Alaska *Ecol. Modelling* **481** 110367
- Mack M C, Walker X J, Johnstone J F, Alexander H D, Melvin A M, Jean M and Miller S N 2021 Carbon loss from boreal forest wildfires offset by increased dominance of deciduous trees *Science* **372** 280–3
- Martín Belda D, Anthoni P, Wårlind D, Olin S, Schurgers G, Tang J and Arneth A 2022 LPJ-GUESS/LSMv1. 0: a next-generation land surface model with high ecological realism *Geosci. Model Dev.* **15** 6709–45
- Melillo J M, Mcguire A D, Kicklighter D W, Moore B, Vorosmarty C J and Schloss A L 1993 Global climate change and terrestrial net primary production *Nature* **363** 234–40
- Miller J D and Thode A E 2007 Quantifying burn severity in a heterogeneous landscape with a relative version of the delta normalized burn ratio (dNBR) *Remote Sens. Environ.* **109** 66–80
- Moubarak M, Sistla S, Potter S, Natali S M and Rogers B M 2023 Carbon emissions and radiative forcings from tundra wildfires in the Yukon–Kuskokwim River Delta, Alaska *Biogeosciences* **20** 1537–57
- Oppen J, Assmann J J, Bjorkman A D, Treier U A, Elberling B, Nabe-Nielsen J and Normand S 2022 Cross-scale regulation of seasonal microclimate by vegetation and snow in the Arctic tundra *Glob. Change Biol.* **28** 7296–312
- Phillips C A, Rogers B M, Elder M, Cooperdock S, Moubarak M, Randerson J T and Frumhoff P C 2022 Escalating carbon emissions from North American boreal forest wildfires and the climate mitigation potential of fire management *Sci. Adv.* **8** eabl7161
- Potter S *et al* 2023 Burned area and carbon emissions across northwestern boreal North America from 2001–2019 *Biogeosciences* **20** 2785–804
- Rogers B M, Soja A J, Goulden M L and Randerson J T 2015 Influence of tree species on continental differences in boreal fires and climate feedbacks *Nat. Geosci.* **8** 228–34
- Sparks A M, Kolden C A, Smith A M, Boschetti L, Johnson D M and Cochrane M A 2018 Fire intensity impacts on post-fire temperate coniferous forest net primary productivity *Biogeosciences* **15** 1173–83
- Stinson G *et al* 2011 An inventory-based analysis of canada's managed forest carbon dynamics, 1990–2008 *Glob. Change Biol.* **17** 2227–44
- Stuenzi S M, Kruse S, Boike J, Herzsuh U, Oehme A, Pestryakova L A, Westermann S and Langer M 2022 Thermohydrological impact of forest disturbances on

- ecosystem-protected permafrost *J. Geophys. Res.* **127** e2021JG006630
- Sullivan B W, Kolb T E, Hart S C, Kaye J P, Hungate B A, Dore S and Montes-Helu M 2011 Wildfire reduces carbon dioxide efflux and increases methane uptake in ponderosa pine forest soils of the southwestern USA *Biogeochemistry* **104** 251–65
- Tan Z, Tieszen L L, Zhu Z, Liu S and Howard S M 2007 An estimate of carbon emissions from 2004 wildfires across Alaskan Yukon River Basin *Carbon Balance Manage.* **2** 12
- Turetsky M R, Kane E S, Harden J W, Ottmar R D, Manies K L, Hoy E and Kasischke E S 2011 Recent acceleration of biomass burning and carbon losses in alaskan forests and peatlands *Nat. Geosci.* **4** 27–31
- Turquety S et al 2007 Inventory of boreal fire emissions for North America in 2004: importance of peat burning and pyroconvective injection *J. Geophys. Res. Atmos.* **112** D12
- Ueyama M, Iwata H and Harazono Y 2023 *AmeriFlux BASE US-Uaf University of Alaska, Fairbanks, Ver. 11–5 (AmeriFlux AMP)* (<https://doi.org/10.17190/AMF/1480322>)
- van der Werf G R, Randerson J T, Giglio L, Collatz G J, Mu M, Kasibhatla P S, Morton D C, DeFries R S, Jin Y and van Leeuwen T T 2010 Global fire emissions and the contribution of deforestation, savanna, forest, agricultural, and peat fires (1997–2009) *Atmos. Chem. Phys.* **10** 11707–35
- Walker X J, Rogers B M, Baltzer J L, Cumming S G, Day N J, Goetz S, Johnstone J F, Schuur E A G, Turetsky M R and Mack M C 2018 Cross-scale controls on carbon emissions from boreal forest mega-fires *Glob. Change Biol.* **24** 4251–65
- Welty J L and Jeffries M I 2020 Combined wildfire datasets for the United States and certain territories, 1878–2019: U.S. Geological Survey data release (<https://doi.org/10.5066/P9Z2VVVRT>)
- Wiedinmyer C and Neff J 2007 Estimates of CO₂ from fires in the united states: implications for carbon management *Carbon Balance Manage.* **2** 10
- Xu Y and Zhuang Q 2023 The importance of interactions between snow, permafrost and vegetation dynamics in affecting terrestrial carbon balance in circumpolar regions *Environ. Res. Lett.* **18** 044007
- Yin Y et al 2020 Fire decline in dry tropical ecosystems enhances decadal land carbon sink *Nat. Commun.* **11** 1900
- Zellweger F, De Frenne P, Lenoir J, Vangansbeke P, Verheyen K, Bernhardt-Römermann M and Coomes D 2020 Forest microclimate dynamics drive plant responses to warming *Science* **368** 772–5
- Zhao B, Zhuang Q, Shurpali N, Kster K and Pumpanen J 2021 North american boreal forests are a large carbon source due to wildfires from 1986 to 2016 *Sci. Rep.* **11** 7723
- Zheng B et al 2023 Record-high CO₂ emissions from boreal fires in 2021 *Science* **379** 912–7
- Zhuang Q, Mcguire A D, O'Neill K P, Harden J W, Romanovsky V E and Yarie J 2002 Modeling soil thermal and carbon dynamics of a fire chronosequence in interior alaska *J. Geophys. Res. Atmos.* **107** FFR-3